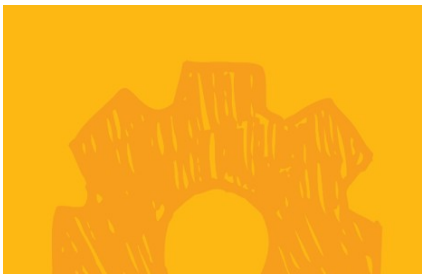




2020 Annual Report



Our Mission

The Bucks County Children’s Museum’s mission is to provide an environment that connects ALL children to the world around them and inspires learning through PLAY.

COVID-19 Impact & Response

On March 12, 2020, the Bucks County Children’s Museum temporarily closed its doors due to COVID-19, 9 months into fiscal year 2020. The data presented in this report reflects the financial and programmatic impact of the closure through June 30, 2020.

Fiscal Impact

As of September 1, 2020, estimated financial losses due to closure total \$315,000. To mitigate this deficit and meet current operational expenses the museum is actively seeking private, foundational, and government support, negotiated a reduction in rent, and has furloughed part-time staff while retaining key staff with a 20% reduction in pay.

Programming Impact

The museum continues to serve its mission through “virtual” learning & community outreach. Weekly educational activities are posted on the museum’s website and social media accounts in order to provide resources for families and remain engaged with the museum audience. In July 2020, BCCM partnered with United Way Bucks County to create PECO S.T.E.A.M. Kits for Kids, an initiative that provided 1,000 kits filled with essential educational materials and a family educational activity guide to underserved children throughout Bucks County. The kits were distributed via United Way preschool sites. This impactful project was supported by PECO, Weis Markets, Busy Bee Toys, Books in Homes USA & Minuteman Press Doylestown.

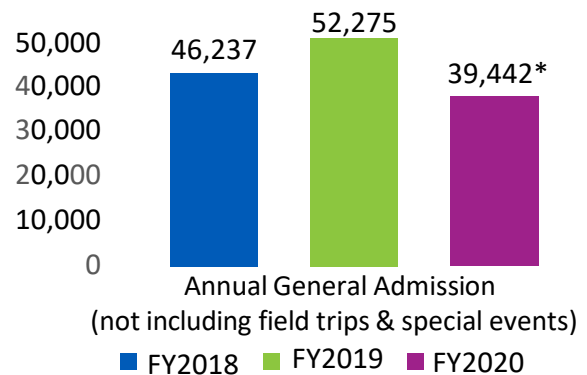
Preparing for REOPENING!

Thanks to the continued support and encouragement from our donors and partners as well as the outstanding efforts of our dedicated staff, BCCM continues its commitment to serve the community during these challenging days. Museum staff is currently working on exhibit maintenance and the installation of new health and safety measures in preparation of reopening. When the time is right, the museum doors will swing wide open and kids will get back to the important work of PLAY!

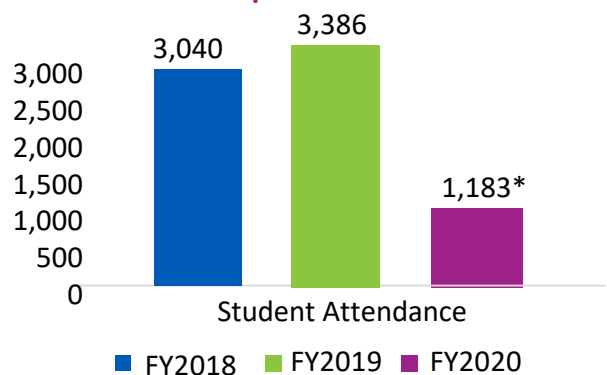
Our Programming & Partnerships

- ✓ Interactive & educational exhibit galleries encourage guests to explore, discover, and learn through play. Galleries include The General Store, The Hospital, The Town Square, Big Dig, Factory Works, Bucks County Country & Airways to Waterways
- ✓ 6,671 children & their caregivers participated in weekly drop-in programs featuring hands-on educational activities and guest presenters from local businesses and nonprofit partners including Snipes Farm, Bucks County Audubon Society, Doylestown Health, Solebury Orchards, and Weis Markets.
- ✓ Educational Field Trip Programming for PreK-1st grades. 34% of K-1 children attending the field trip program receive free or reduced lunch at school.
- ✓ PECO S.T.E.A.M. in the Summer 2019 brought a variety of presenters to BCCM with a focus on science, technology, engineering, art, and math. Over 1,900 museum visitors enjoyed programming presented by The Adventure Aquarium, The Franklin Institute, The DaVinci Science Center, Art with Miss Melissa, The Conservatory, The County Theater, Briar Bush Nature Center, and Folks Butterfly Farm.

General Admission



Field Trip Attendance

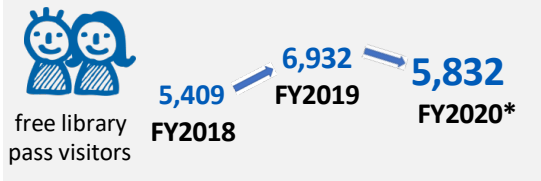
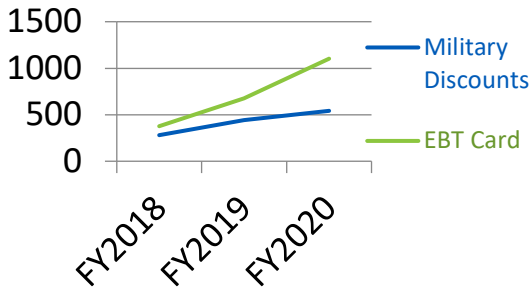


*Reflects operations closure March 12, 2020

Making Accessibility a Priority

Access Programs are initiatives which offer reduced or free admission to the public with the goal of providing access to the museum for those who may not be able to afford admission. These programs include:

- EBT (Electronic Benefit Cards) Discounts
- Blue Star Summer Military & Veterans Discounts
- Library “Check-Us-Out” Passes



*Reflects operations closure March 12, 2020

High School & College Volunteers



Our Membership



719 household museum memberships

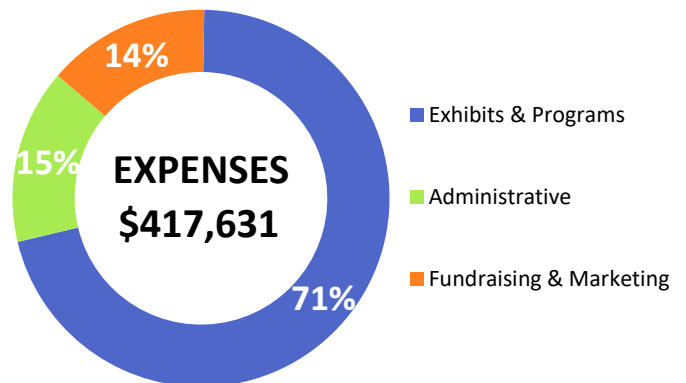
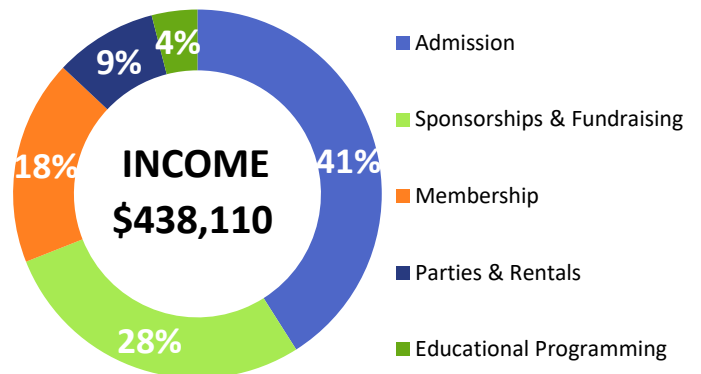
14,879



member visits to the museum in FY2020

Income & Expenses

To keep admission & membership prices down, we rely on our community partners & volunteers to offset expenses.



Excess revenue is reinvested into the museum to support future growth. These funds support increases in operational expenses, new programs and exhibits, and other investments in the museum to support long-term sustainability. Expenses do not reflect non-cash depreciation.

Thank you to all our donors who believe in the POWER of PLAY!

Annual Support

David R. & Patricia D. Atkinson

Foundation

BCCM Membership
Bucks County Commissioners
Friends of U.S. Army Ranger Capt. Connor Bednarzyk
Dr. Lisa Biggs & Mr. Kerry Wargo
Les & Rosemary Burrage
Chris & Gail Brown
Lynn Bush & John Bartle
Eric & Sarah Cornwell
Chris & Jennifer Gavigan
John & Jeanne Hubbard
Todd & April Hudson
Jaker Technologies
Paul & Kelly Krumenacker
Paul Lindenmaier
Terrence McGlinchey
Renee McGovern
Dr. Naline Lai & Paul Rehmet
MR Metzger Family Foundation
Jack Mohr
Dr. Anne O'Day, DMD
Garrett & Lisa Owen
Donald & Joan Parlee
Tim & Erin Schuback
Kenneth & Margaret Swanstrom
Sarah & Tyler Tomlinson
Lillian Ulkloss
Matt & Jennifer Zelesko

Grant Support

Bucks County Foundation
Foundations Community Partnership
Pennsylvania Historical & Museum Commission
Visit Bucks County
PECO

Corporate Support

Curtin & Heefner Attorneys at Law
Richard Snyder, PC
Suder Pools
Wealth Advisory Services
Weis Markets

In-Kind Partners

Buckingham Pediatrics
Fish & Pets Plus Flemington, NJ
Suder Pools
Worth & Company

Corporate Partners



With Special Gratitude to Think Communications

Meet the Staff

Executive Director - Kelly Krumenacker
Assistant Director - Gabrielle Kanter
Operations Manager - Donna Morrissey
Grant & EITC Coordinator - Caryn Markin
Education Coordinator - Amy Griffiths
Staff Managers - Crystal Hunter, Deb Palma & Julianne Laurich

Meet the Bucks County Children's Museum Board of Directors

President:
Kelly Krumenacker
Chairman:
Scott Setzman - *Vertical Screen, Inc.*
Vice Chairman:
Garrett Owen - *Doylestown Health*
Secretary:
Chris Thompson - *Thompson Financial, LLP*
Treasurer:
Sarah Tomlinson - *Delaware Valley University*

Dr. Lisa Biggs - *The Children's Hospital of Philadelphia*
Chris Brown - *Independent Consultant*
Eric Cornwell - *Cornwell Corporation*
Ed Dixon - *Fulton Bank*
Charles Jebran - *Jebran & Abraham, P.C.*
Paul Lindenmaier - *Buckingham Friends School*
Tim Schuback - *MIR Holdings, LLC*
Richard Snyder - *Kreischer Miller*
Eric Vandersluis - *Vanguard*
Matt Zelesko - *Comcast*

Advisory Board

Lynn T. Bush
Judy Cody
Linda Felt
Christopher Gavigan
Mayor Larry Keller
Nancy Kolb
Dr. Naline Lai
Kathryn Lambert
Louis Lombardi
Jeffrey Marshall
Joanne Murray, Esq.

